

RIFT

WUJIAN VERSE

HHC + HHC0 + THCP

EXPERIENCE
LIFT OFF

2g

PEN

SKYWALKER
OG

HYBRID



HHC
Sample Matrix:
CBD/HEMP
Derivative Products
(Inhalation - Heated)



DEA No. RA0571996
FL License # CMTL-0003
CLIA No. 10D1094068

Certificate of Analysis

Compliance Test

Pinnacle Hemp
2900 Davis Blvd
Joplin, MO 64804

Batch # 7
Batch Date: 2022-04-01
Extracted From: CBD

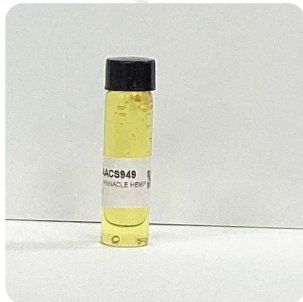
Sampling Method: MSP 7.3.1
Test Reg State: Oregon

Production Facility: pinnacle hemp
Production Date: 2022-04-01

Order # PIN220421-030001
Order Date: 2022-04-21
Sample # AAC949

Sampling Date: 2022-04-25
Lab Batch Date: 2022-04-25
Completion Date: 2022-04-28

Initial Gross Weight: 40.008 g



Product Image

Potency
Tested

HHC
Tested

HHC Metals
Passed

Mycotoxins
Passed

Pesticides
Passed

Residual Solvents
Passed

Listeria
Monocytogenes
Passed

Pathogenic
Passed

Potency 21 (LCUV)

Specimen Weight: 59.240 mg

Tested
(LCUV)

Analyte	Dilution (1:n)	LOD (%)	LOQ (%)	Result (mg/g)	(%)
Delta-8 THC	10.000	0.000026	0.0015	1.1950	0.1195
CBN	10.000	0.000014	0.0015	0.6160	0.0616
Exo-THC	10.000	0.00023	0.0015	<LOQ	<LOQ
THCVA	10.000	0.000047	0.0015	<LOQ	<LOQ
THCV	10.000	0.000007	0.0015	<LOQ	<LOQ
THCA	10.000	0.000032	0.0015	<LOQ	<LOQ
CBC	100.000	0.000018	0.0015	<LOQ	<LOQ
Delta-9 THC-O Acetate	10.000	0.000077	0.0003	<LOQ	<LOQ
CBCA	10.000	0.000107	0.0015	<LOQ	<LOQ
Delta-8 THCV	10.000	0.000004	0.0015	<LOQ	<LOQ
Delta-8 THC-O Acetate	10.000	0.000027	0.0003	<LOQ	<LOQ
CBT	10.000	0.0002	0.0015	<LOQ	<LOQ
CBNA	10.000	0.000095	0.0015	<LOQ	<LOQ
CBL	10.000	0.000035	0.0015	<LOQ	<LOQ
CBGA	10.000	0.00008	0.0015	<LOQ	<LOQ
CBG	10.000	0.000248	0.0015	<LOQ	<LOQ
CBDVA	10.000	0.000014	0.0015	<LOQ	<LOQ
CBDV	10.000	0.000065	0.0015	<LOQ	<LOQ
CBDA	10.000	0.000001	0.0015	<LOQ	<LOQ
CBD	10.000	0.000054	0.0015	<LOQ	<LOQ
Delta-9 THC	10.000	0.000013	0.0015	<LOQ	<LOQ

Potency Summary

Total THC None Detected	Total CBD None Detected
Total CBG None Detected	Total CBN 0.062%
Other Cannabinoids 0.120%	Total Cannabinoids 0.181%

HHC Summary

Analyte	Result (mg/g)	(%)	Total/Unit (mg)
Total HHC	908.375	90.8375%	0.00000

Xueli Gao
Ph.D., DABT
Lab Toxicologist

Aixia Sun
D.H.Sc., M.Sc., B.Sc., MT (AAB)
Lab Director/Principal Scientist



Definitions and Abbreviations used in this report: *Total CBD = CBD + (CBD-A * 0.877), *Total CBDV = CBDV + (CBDVA * 0.87), *Total THC = THCA-A * 0.877 + Delta 9 THC, *Total THCV = THCV + (THCVA * 0.87), *CBG Total = (CBGA * 0.877) + CBG, *CBN Total = (CBNA * 0.877) + CBN, *Total CBC = CBC + (CBCA * 0.877), *Total THC-O-Acetate = Delta 8 THC-O-Acetate + Delta 9 THC-O-Acetate, *Other Cannabinoids Total = Total Cannabinoids - All the listed cannabinoids on the summary section, *Total Detected Cannabinoids = Delta8-THC + Delta9-THC + Total CBN + CBT + Delta8-THCV + Total CBG + Total CBD + Total THCV + CBL + Total THC + Total CBC + Total CBDV + Delta10-THC + Total THC-O-Acetate, *Analyte Details above show the Dry Weight Concentrations unless specified as 12% moisture concentration. (mg/ml) = Milligrams per Milliliter, LOQ = Limit of Quantitation, LOD = Limit of Detection, Dilution = Dilution Factor (ppb) = Parts per Billion, (%) = Percent, (cfu/g) = Colony Forming Unit per Gram (cfu/g) = Colony Forming Unit per Gram, LOD = Limit of Detection, (µg/g) = Microgram per Gram (ppm) = Parts per Million, (ppm) = (µg/g), (aw) = aw (area ratio) = Area Ratio, (mg/Kg) = Milligram per Kilogram, *Measurement of Uncertainty = +/- 10%



This report shall not be reproduced, without written approval, from ACS Laboratory. The results of this report relate only to the material or product analyzed. Test results are confidential unless explicitly waived otherwise. Accredited by a third-party accrediting body as a competent testing laboratory pursuant to ISO/IEC 17025 of the International Organization for Standardization.



HHC
Sample Matrix:
CBD/HEMP
Derivative Products
(Inhalation - Heated)



DEA No. RA0571996
FL License # CMTL-0003
CLIA No. 10D1094068

Certificate of Analysis

Compliance Test

Pinnacle Hemp
2900 Davis Blvd
Joplin, MO 64804

Batch # 7
Batch Date: 2022-04-01
Extracted From: CBD

Sampling Method: MSP 7.3.1
Test Reg State: Oregon

Production Facility: pinnacle hemp
Production Date: 2022-04-01

Order # PIN220421-030001
Order Date: 2022-04-21
Sample # AAC949

Sampling Date: 2022-04-25
Lab Batch Date: 2022-04-25
Completion Date: 2022-04-28

Initial Gross Weight: 40.008 g

Pesticides

Specimen Weight: 261.680 mg

Dilution Factor: 5.732

Analyte	LOQ (ppb)	Action Level (ppb)	Result (ppb)	Analyte	LOQ (ppb)	Action Level (ppb)	Result (ppb)
Abamectin	28.23	300	<LOQ	Imazalil	30	100	<LOQ
Acephate	30	3000	<LOQ	Imidacloprid	30	3000	<LOQ
Acequinocyl	48	2000	<LOQ	Kresoxim Methyl	30	1000	<LOQ
Acetamiprid	30	3000	<LOQ	Malathion	30	2000	<LOQ
Aldicarb	30	100	<LOQ	Metalaxyl	10	3000	<LOQ
Azoxystrobin	10	3000	<LOQ	Methiocarb	30	100	<LOQ
Bifenazate	30	3000	<LOQ	Methomyl	30	100	<LOQ
Bifenthrin	30	500	<LOQ	Mevinphos	30	100	<LOQ
Carbaryl	10	500	<LOQ	Myclobutanil	30	3000	<LOQ
Chlorfenapyr	48	100	<LOQ	Naled	30	500	<LOQ
Chlorpyrifos	30	100	<LOQ	Oxamyl	30	500	<LOQ
Clofentazine	30	500	<LOQ	Pacloutrazol	30	100	<LOQ
Coumaphos	30	100	<LOQ	Parathion-methyl	48	100	<LOQ
Cyfluthrin	30	1000	<LOQ	Pentachloronitrobenzene	30	200	<LOQ
Cypermethrin	30	1000	<LOQ	Permethrin	30	1000	<LOQ
Daminozide	30	100	<LOQ	Phosmet	30	200	<LOQ
Diazinon	30	200	<LOQ	Piperonylbutoxide	30	3000	<LOQ
Dichlorvos	30	100	<LOQ	Prallethrin	30	400	<LOQ
Dimethoate	30	100	<LOQ	Propiconazole	30	1000	<LOQ
Dimethomorph	30	3000	<LOQ	Propoxur	30	100	<LOQ
Ethionphos	30	100	<LOQ	Pyrethrins	30	1000	<LOQ
Etofenprox	30	100	<LOQ	Pyridaben	30	3000	<LOQ
Etoxazole	30	1500	<LOQ	Spinetoram	30	3000	<LOQ
Fenhexamid	30	3000	<LOQ	Spiromesifen	30	3000	<LOQ
Fenoxycarb	30	100	<LOQ	Spirotetramat	30	3000	<LOQ
Fenpyroximate	30	2000	<LOQ	Spiroxamine	30	100	<LOQ
Fipronil	30	100	<LOQ	Tebuconazole	30	1000	<LOQ
Fonicamid	30	2000	<LOQ	Thiacloprid	30	100	<LOQ
Fludioxonil	30	3000	<LOQ	Thiamethoxam	30	1000	<LOQ
Hexythiazox	30	2000	<LOQ	Trifloxystrobin	30	3000	<LOQ

Passed
(LCMS/GCMS)

Residual Solvents - FL (CBD)

Specimen Weight: 12.900 mg

Dilution Factor: 1.000

Analyte	LOQ (ppm)	Action Level (ppm)	Result (ppm)	Analyte	LOQ (ppm)	Action Level (ppm)	Result (ppm)
1,1-Dichloroethene	0.16	8	<LOQ	Heptane	1.39	5000	<LOQ
1,2-Dichloroethane	0.04	5	<LOQ	Hexane	1.17	290	<LOQ
Acetone	2.08	5000	<LOQ	Isopropyl alcohol	1.39	500	<LOQ
Acetonitrile	1.17	410	<LOQ	Methanol	0.69	3000	<LOQ
Benzene	0.02	2	<LOQ	Methylene chloride	2.43	600	<LOQ
Butanes	2.5	2000	<LOQ	Pentane	2.08	5000	<LOQ
Chloroform	0.04	60	<LOQ	Propane	5.83	2100	<LOQ
Ethanol	2.78	5000	<LOQ	Toluene	2.92	890	<LOQ
Ethyl Acetate	1.11	5000	<LOQ	Total Xylenes	2.92	2170	<LOQ
Ethyl Ether	1.39	5000	<LOQ	Trichloroethylene	0.49	80	<LOQ
Ethylene Oxide	0.1	5	<LOQ				

Passed
(GCMS)

HHC Metals

Specimen Weight: 253.500 mg

Dilution Factor: 197.239

Analyte	LOQ (ppb)	Action Level (ppb)	Result (ppb)	Analyte	LOQ (ppb)	Action Level (ppb)	Result (ppb)
Aluminium (Al)	1000	na	Passed	Nickel (Ni)	250	500	<LOQ
Arsenic (As)	100	200	<LOQ	Palladium (Pd)	50	100	<LOQ
Cadmium (Cd)	100	200	<LOQ	Platinum (Pt)	50	100	<LOQ
Lead (Pb)	100	500	<LOQ	Zinc (Zn)	1000	na	<LOQ
Mercury (Hg)	100	200	<LOQ				

Passed
(ICP-MS)

Mycotoxins

Specimen Weight: 261.680 mg

Dilution Factor: 5.732

Analyte	LOQ (ppb)	Action Level (ppb)	Result (ppb)	Analyte	LOQ (ppb)	Action Level (ppb)	Result (ppb)
Aflatoxin B1	6	20	<LOQ	Aflatoxin G2	6	20	<LOQ
Aflatoxin B2	6	20	<LOQ	Ochratoxin A	12	20	<LOQ
Aflatoxin G1	6	20	<LOQ				

Passed
(LCMS)

Listeria Monocytogenes

Specimen Weight: 991.820 mg

Dilution Factor: 1.000

Analyte	Action Level (cfu/g)	Result
Listeria Monocytogenes	1	Absence in 1g

Passed
(qPCR)

Xueli Gao
Ph.D., DABT
Lab Toxicologist

Aixia Sun
D.H.Sc., M.Sc., B.Sc., MT (AAB)
Lab Director/Principal Scientist



Definitions and Abbreviations used in this report: *Total CBD = CBD + (CBD-A * 0.877), *Total CBDV = CBDV + (CBDVA * 0.87), *Total THC = THCA-A * 0.877 + Delta 9 THC, *Total THCV = THCV + (THCVA * 0.87), *CBG Total = (CBGA * 0.877) + CBG, *CBN Total = (CBNA * 0.877) + CBN, *Total CBC = CBC + (CBCA * 0.877), *Total THC-O-Acetate = Delta 8 THC-O-Acetate + Delta 9 THC-O-Acetate, *Other Cannabinoids Total = Total Cannabinoids - All the listed cannabinoids on the summary section, *Total Detected Cannabinoids = Delta6a10a-THC + Delta8-THC + Total CBN + CBT + Delta8-THCV + Total CBG + Total THC + Total THCV + CBL + Total THC + Total CBC + Total CBDV + Delta10-THC + Total THC-O-Acetate, *Analyte Details above show the Dry Weight Concentrations unless specified as 12% moisture concentration. (mg/ml) = Milligrams per Milliliter, LOQ = Limit of Quantitation, LOD = Limit of Detection, Dilution = Dilution Factor (ppb) = Parts per Billion, (%) = Percent, (cfu/g) = Colony Forming Unit per Gram (cfu/g) = Colony Forming Unit per Gram, LOD = Limit of Detection, (µg/g) = Microgram per Gram (ppm) = Parts per Million, (ppm) = (µg/g), (aw) = aw (area ratio) = Area Ratio, (mg/Kg) = Milligram per Kilogram, *Measurement of Uncertainty = +/- 10%

This report shall not be reproduced, without written approval, from ACS Laboratory. The results of this report relate only to the material or product analyzed. Test results are confidential unless explicitly waived otherwise. Accredited by a third-party accrediting body as a competent testing laboratory pursuant to ISO/IEC 17025 of the International Organization for Standardization.



DEA No. RA0571996
FL License # CMTL-0003
CLIA No. 10D1094068

Certificate of Analysis

Compliance Test

Pinnacle Hemp
2900 Davis Blvd
Joplin, MO 64804

Batch # 7
Batch Date: 2022-04-01
Extracted From: CBD

Sampling Method: MSP 7.3.1
Test Reg State: Oregon

Production Facility: pinnacle hemp
Production Date: 2022-04-01

Order # PIN220421-030001
Order Date: 2022-04-21
Sample # AAC949

Sampling Date: 2022-04-25
Lab Batch Date: 2022-04-25
Completion Date: 2022-04-28

Initial Gross Weight: 40.008 g



HHC

Specimen Weight: 59.240 mg

Tested
(LCMS)

Dilution Factor: 1.000

Analyte	LOQ (%)	Result (mg/g)	(%)	Analyte	LOQ (%)	Result (mg/g)	(%)
(9R)-HHC	7.5E-5	490.0000	49	(±)-9β-hydroxy-HHC	7.5E-5	0.3750	0.0375
(9S)-HHC	7.5E-5	418.0000	41.8	Total HHC	7.5E-5	908.3750	90.8375



Pathogenic SAE (qPCR)

Specimen Weight: 252.480 mg

Passed
(qPCR)

Dilution Factor: 1.000

Analyte	Action Level (cfu/g)	Result (cfu/g)	Analyte	Action Level (cfu/g)	Result (cfu/g)
Aspergillus (Flavus, Fumigatus, Niger, Terreus)	1	Absence in 1g	Salmonella	1	Absence in 1g
E.Coli	1	Absence in 1g			

Xueli Gao
Xueli Gao
Lab Toxicologist
Ph.D., DABT

Aixia Sun
Aixia Sun
Lab Director/Principal Scientist
D.H.Sc., M.Sc., B.Sc., MT (AAB)



Definitions and Abbreviations used in this report: *Total CBD = CBD + (CBD-A * 0.877), *Total CBDV = CBDV + (CBDVA * 0.87), *Total THC = THCA-A * 0.877 + Delta 9 THC, *Total THCV = THCV + (THCVA * 0.87), *CBG Total = (CBGA * 0.877) + CBG, *CBN Total = (CBNA * 0.877) + CBN, *Total CBC = CBC + (CBCA * 0.877), *Total THC-O-Acetate = Delta 8 THC-O-Acetate + Delta 9 THC-O-Acetate, *Other Cannabinoids Total = Total Cannabinoids - All the listed cannabinoids on the summary section, *Total Detected Cannabinoids = Delta6a10a-THC + Delta8-THC + Total CBN + CBT + Delta8-THCV + Total CBG + Total CBD + Total THCV + CBL + Total THC + Total CBC + Total CBDV + Delta10-THC + Total THC-O-Acetate, *Analyte Details above show the Dry Weight Concentrations unless specified as 12% moisture concentration. (mg/ml) = Milligrams per Milliliter, LOQ = Limit of Quantitation, LOD = Limit of Detection, Dilution = Dilution Factor (ppb) = Parts per Billion, (%) = Percent, (cfu/g) = Colony Forming Unit per Gram (cfu/g) = Colony Forming Unit per Gram, LOD = Limit of Detection, (µg/g) = Microgram per Gram (ppm) = Parts per Million, (ppm) = (µg/g), (aw) = aw (area ratio) = Area Ratio, (mg/Kg) = Milligram per Kilogram, *Measurement of Uncertainty = +/- 10%

This report shall not be reproduced, without written approval, from ACS Laboratory. The results of this report relate only to the material or product analyzed. Test results are confidential unless explicitly waived otherwise. Accredited by a third-party accrediting body as a competent testing laboratory pursuant to ISO/IEC 17025 of the International Organization for Standardization.

HHC-O

 Sample ID: SA-220221-7425
 Batch: 1
 Type: Finished Products
 Matrix: Concentrate - Distillate

 Received: 02/23/2022
 Completed: 03/03/2022

Client
 Pinnacle Hemp
 2900 Davis Blvd
 Joplin, MO 64804
 USA

Summary

Test	Date Tested	Status
Cannabinoids	03/03/2022	Tested
Cannabinoids (Additional)	02/28/2022	Tested

Cannabinoids by HPLC-PDA, LC-MS/MS, and/or GC-MS/MS

ND	1.15 %	1.15 %	Not Tested	Not Tested	Yes
Total Δ9-THC	Δ8-THC	Total Cannabinoids	Moisture Content	Foreign Matter	Internal Standard Normalization

Analyte	LOD (%)	LOQ (%)	Result (%)	Result (mg/g)
CBC	0.0095	0.0284	ND	ND
CBCA	0.0181	0.0543	ND	ND
CBCV	0.006	0.018	ND	ND
CBD	0.0081	0.0242	ND	ND
CBDA	0.0043	0.013	ND	ND
CBDV	0.0061	0.0182	ND	ND
CBDVA	0.0021	0.0063	ND	ND
CBG	0.0057	0.0172	ND	ND
CBGA	0.0049	0.0147	ND	ND
CBL	0.0112	0.0335	ND	ND
CBLA	0.0124	0.0371	ND	ND
CBN	0.0056	0.0169	ND	ND
CBNA	0.006	0.0181	ND	ND
Δ8-THC	0.0104	0.0312	1.15	11.5
Δ9-THC	0.0076	0.0227	ND	ND
Δ9-THCA	0.0084	0.0251	ND	ND
Δ9-THCV	0.0069	0.0206	ND	ND
Δ9-THCVA	0.0062	0.0186	ND	ND
Total Δ9-THC			ND	ND
Total CBD			ND	ND
Total			1.15	11.5

ND = Not Detected; NT = Not Tested; LOD = Limit of Detection; LOQ = Limit of Quantitation; RL = Reporting Limit; Δ = Delta; Total Δ9-THC = Δ9-THCA * 0.877 + Δ9-THC; Total CBD = CBDA * 0.877 + CBD;



 Generated By: Ryan Bellone
 Commercial Director
 Date: 03/03/2022



 Tested By: Scott Caudill
 Senior Scientist
 Date: 03/03/2022

 ISO/IEC 17025:2017 Accredited
 Accreditation #108651


HHC-O

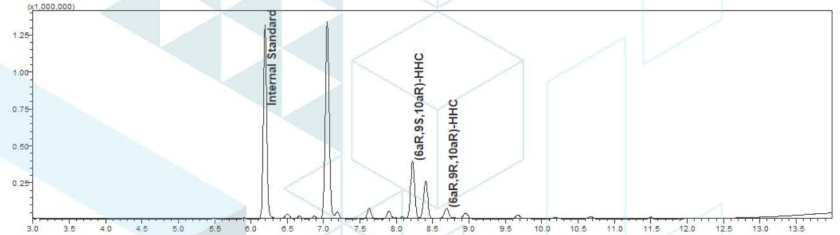
 Sample ID: SA-220221-7425
 Batch: 1
 Type: Finished Products
 Matrix: Concentrate - Distillate

 Received: 02/23/2022
 Completed: 03/03/2022

Client
 Pinnacle Hemp
 2900 Davis Blvd
 Joplin, MO 64804
 USA

Cannabinoids by HPLC-PDA, LC-MS/MS, and/or GC-MS/MS

Analyte	LOD (%)	LOQ (%)	Result (%)	Result (mg/g)
(6aR,9R,10aR)-HHC			12.3	123
(6aR,9S,10aR)-HHC			1.89	18.9
Δ 8-THC-O Acetate			8.26	82.6
Δ 9-THC-O Acetate			0.512	5.12
(6aR,9R,10aR)-HHC Acetate			2.95	29.5
(6aR,9S,10aR)-HHC Acetate			47.8	478
Total Additional Cannabinoids			73.7	737
Total			73.7	737

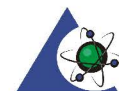

 ND = Not Detected; NT = Not Tested; LOD = Limit of Detection; LOQ = Limit of Quantitation; RL = Reporting Limit; Δ = Delta; Total Δ 9-THC = Δ 9-THCA * 0.877 + Δ 9-THC; Total CBD = CBDA * 0.877 + CBD;



 Generated By: Ryan Bellone
 Commercial Director
 Date: 03/03/2022



 Tested By: Scott Caudill
 Senior Scientist
 Date: 02/28/2022

 ISO/IEC 17025:2017 Accredited
 Accreditation #108651


THCp

 Sample ID: SA-220627-10215
 Batch: 1
 Type: In-Process Materials
 Matrix: Concentrate - Distillate
 Unit Mass (g):

 Received: 06/29/2022
 Completed: 07/06/2022

Client
 Pinnacle Hemp
 2900 Davis Blvd
 Joplin, MO 64804
 USA


Summary

Test Cannabinoids	Date Tested 07/06/2022	Status Tested
-----------------------------	----------------------------------	-------------------------

ND Total Δ9-THC	87.6 % Δ8-THCP	91.7 % Total Cannabinoids	Not Tested Moisture Content	Not Tested Foreign Matter	Yes Internal Standard Normalization
---------------------------	--------------------------	-------------------------------------	---------------------------------------	-------------------------------------	-----------------------------------------------

Cannabinoids by HPLC-PDA, LC-MS/MS, and/or GC-MS/MS

Analyte	LOD (%)	LOQ (%)	Result (%)	Result (mg/g)
CBC	0.0095	0.0284	ND	ND
CBCA	0.0181	0.0543	ND	ND
CBCV	0.006	0.018	ND	ND
CBD	0.0081	0.0242	ND	ND
CBDA	0.0043	0.013	ND	ND
CBDP	0.0067	0.02	ND	ND
CBDV	0.0061	0.0182	ND	ND
CBDVA	0.0021	0.0063	ND	ND
CBG	0.0057	0.0172	ND	ND
CBGA	0.0049	0.0147	ND	ND
CBL	0.0112	0.0335	ND	ND
CBLA	0.0124	0.0371	ND	ND
CBN	0.0056	0.0169	ND	ND
CBNA	0.006	0.0181	ND	ND
Δ8-THC	0.0104	0.0312	ND	ND
Δ8-THCP	0.0067	0.02	87.6	876
Δ9-THC	0.0076	0.0227	ND	ND
Δ9-THCA	0.0084	0.0251	ND	ND
Δ9-THCP	0.0067	0.02	4.08	40.8
Δ9-THCV	0.0069	0.0206	ND	ND
Δ9-THCVA	0.0062	0.0186	ND	ND
Total Δ9-THC			ND	ND
Total CBD			ND	ND
Total			91.7	917

ND = Not Detected; NT = Not Tested; LOD = Limit of Detection; LOQ = Limit of Quantitation; RL = Reporting Limit; Δ = Delta; Total Δ9-THC = Δ9-THCA * 0.877 + Δ9-THC; Total CBD = CBDA * 0.877 + CBD;



 Generated By: Ryan Bellone
 Commercial Director
 Date: 07/06/2022



 Tested By: Scott Caudill
 Senior Scientist
 Date: 07/06/2022

 ISO/IEC 17025:2017 Accredited
 Accreditation #108651
