

RIFT

WORLD VERSE

DELTA + THCO + THCP

EXPERIENCE
LIFT OFF

2g

PEN

ALIEN ROCK
CANDY

HYBRID



License No. 800025015
 FL License # CMTL-0003
 CLIA No. 10D1094068

Certificate of Analysis

Compliance Test

Pinnacle Hemp
 2231 Missouri Ave
 Carthage, MO 64836

Batch # 2
 Batch Date: 2021-12-01
 Extracted From: CBD

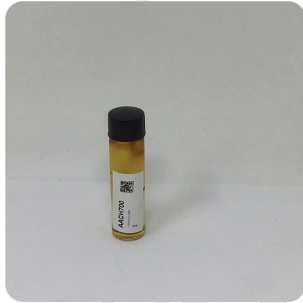
Test Reg State: Oregon

Production Facility: pinnacle hemp
 Production Date: 2021-12-01

Order # PIN211223-010001
 Order Date: 2021-12-23
 Sample # AACH700

Sampling Date: 2021-12-30
 Lab Batch Date: 2021-12-30
 Completion Date: 2022-01-03

Initial Gross Weight: 12.569 g



Product Image

Potency
 Tested

Potency - 11

Specimen Weight: 58.950 mg

Analyte	Dilution (1:n)	LOD (%)	LOQ (%)	Result (mg/g)	Result (%)
Delta-9 THC	1000.000	0.000013	0.001	692.690	69.269
CBD	1000.000	0.000054	0.001	39.540	3.954
CBG	1000.000	0.000248	0.001	1.810	0.181
CBN	1000.000	0.000014	0.001	0.930	0.093
CBC	1000.000	0.000018	0.001	0.430	0.043
CBDV	1000.000	0.000065	0.001	0.360	0.036
THCV	1000.000	0.000007	0.001		<LOQ
Delta-8 THC	1000.000	0.000026	0.001		<LOQ
CBGA	1000.000	0.00008	0.001		<LOQ
CBDA	1000.000	0.00001	0.001		<LOQ
THCA-A	1000.000	0.000032	0.001		<LOQ

Tested
 (HPLC/LCMS)

Potency Summary

Total THC 69.269%	Total CBD 3.954%
Total CBG 0.181%	Total CBN 0.093%
Other Cannabinoids 0.079%	Total Cannabinoids 73.576%

Xueli Gao
 Ph.D., DABT
 Lab Toxicologist

Aixia Sun
 D.H.Sc., M.Sc., B.Sc., MT (AAB)
 Lab Director/Principal Scientist



Definitions and Abbreviations used in this report: *Total CBD = CBD + (CBD-A * 0.877), *Total CBDV = CBDV + (CBDVA * 0.87), *Total THC = THCA-A * 0.877 + Delta 9 THC, *Total THCV = THCV + (THCVA * 0.87), *CBG Total = (CBGA * 0.877) + CBG, *CBN Total = (CBNA * 0.877) + CBN, *Total CBC = CBC + (CBCA * 0.877), *Other Cannabinoids Total = Total Cannabinoids - All the listed cannabinoids on the summary section, *Total Detected Cannabinoids = Delta8-THC + Total CBN + CBT + Delta8-THCV + Total CBG + Total CBD + Total THCV + CBL + Total THC + Total CBC + Total CBDV + Delta10-THC, *Total THC-O-Acetate = Delta 8 THC-O-Acetate + THC-O-Acetate, *Analyte Details above show the Dry Weight Concentrations unless specified as 12% moisture concentration. (mg/ml) = Milligrams per Milliliter, LOQ = Limit of Quantitation, LOD = Limit of Detection, Dilution = Dilution Factor (ppb) = Parts per Billion, (%) = Percent, (cfu/g) = Colony Forming Unit per Gram (cfu/g) = Colony Forming Unit per Gram, LOD = Limit of Detection, (µg/g) = Microgram per Gram (ppm) = Parts per Million, (ppm) = (µg/g), (aw) = aw (area ratio) = Area Ratio, (mg/Kg) = Milligram per Kilogram, *Measurement of Uncertainty = +/- 10%

This report shall not be reproduced, without written approval, from ACS Laboratory. The results of this report relate only to the material or product analyzed. Test results are confidential unless explicitly waived otherwise. Accredited by a third-party accrediting body as a competent testing laboratory pursuant to ISO/IEC 17025 of the International Organization for Standardization.



License No. 800025015
FL License # CMTL-0003
CLIA No. 10D1094068

Certificate of Analysis

Compliance Test

Pinnacle Hemp
2231 Missouri Ave
Carthage, MO 64836

Batch # 2
Batch Date: 2022-01-31

Test Reg State: Oregon

Production Facility: pinnacle hemp
Production Date: 2022-01-31

Order # PIN220131-070001
Order Date: 2022-01-31
Sample # AACK803

Sampling Date: 2022-02-03
Lab Batch Date: 2022-02-03
Completion Date: 2022-02-06

Initial Gross Weight: 13.533 g



Potency
Tested

Product Image

Potency 22 (LCUV)

Specimen Weight: 47.070 mg

Tested
(LCUV)

Analyte	Dilution (1:n)	LOD (%)	LOQ (%)	Result (mg/g)	(%)
Delta-8 THC-O-Acetate	1000.000	0.000027	0.0003	803.1000	80.3100
Delta-9 THC-O-Acetate	100.000	0.000077	0.0003	38.1500	3.8150
Delta-8 THC	10.000	0.000026	0.0015	8.1570	0.8157
CBG	10.000	0.000248	0.0015	0.4646	0.0465
THCVA	10.000	0.000047	0.0015	<LOQ	<LOQ
THCA-A	10.000	0.000032	0.0015	<LOQ	<LOQ
THCV	10.000	0.000007	0.0015	<LOQ	<LOQ
Exo-THC	10.000	0.00023	0.0015	<LOQ	<LOQ
CBC	10.000	0.000018	0.0015	<LOQ	<LOQ
Delta-9 THC	10.000	0.000013	0.0015	<LOQ	<LOQ
CBCA	10.000	0.000107	0.0015	<LOQ	<LOQ
Delta-10 THC	10.000	0.000003	0.0015	<LOQ	<LOQ
CBT	10.000	0.0002	0.0015	<LOQ	<LOQ
CBNA	10.000	0.000095	0.0015	<LOQ	<LOQ
CBN	10.000	0.000014	0.0015	<LOQ	<LOQ
CBL	10.000	0.000035	0.0015	<LOQ	<LOQ
CBGA	10.000	0.00008	0.0015	<LOQ	<LOQ
CBDVA	10.000	0.000014	0.0015	<LOQ	<LOQ
CBDV	10.000	0.000065	0.0015	<LOQ	<LOQ
CBDA	10.000	0.00001	0.0015	<LOQ	<LOQ
CBD	10.000	0.000054	0.0015	<LOQ	<LOQ
Delta-8 THCV	10.000	0.00004	0.0015	<LOQ	<LOQ

Potency Summary

Total THC None Detected	Total CBD None Detected
Total CBG 0.046%	Total CBN None Detected
Other Cannabinoids 84.941%	Total Cannabinoids 84.987%

Xueli Gao
Ph.D., DABT
Lab Toxicologist

Aixia Sun
D.H.Sc., M.Sc., B.Sc., MT (AAB)
Lab Director/Principal Scientist



Definitions and Abbreviations used in this report: *Total CBD = CBD + (CBD-A * 0.877), *Total CBDV = CBDV + (CBDVA * 0.87), *Total THC = THCA-A * 0.877 + Delta 9 THC, *Total THCV = THCV + (THCVA * 0.87), *CBG Total = (CBGA * 0.877) + CBG, *CBN Total = (CBNA * 0.877) + CBN, *Total CBC = CBC + (CBCA * 0.877), *Total THC-O-Acetate = Delta 8 THC-O-Acetate + Delta 9 THC-O-Acetate, *Other Cannabinoids Total = Total Cannabinoids - All the listed cannabinoids on the summary section, *Total Detected Cannabinoids = Delta8-THC + Total CBN + CBT + Delta8-THCV + Total CBG + Total CBD + Total THCV + CBL + Total THC + Total CBC + Total CBDV + Delta10-THC + Total THC-O-Acetate, *Analyte Details above show the Dry Weight Concentrations unless specified as 12% moisture concentration. (mg/ml) = Milligrams per Milliliter, LOQ = Limit of Quantitation, LOD = Limit of Detection, Dilution = Dilution Factor (ppb) = Parts per Billion, (%) = Percent, (cfu/g) = Colony Forming Unit per Gram (cfu/g) = Colony Forming Unit per Gram, LOD = Limit of Detection, (µg/g) = Microgram per Gram (ppm) = Parts per Million, (ppm) = (µg/g), (aw) = aw (area ratio) = Area Ratio, (mg/Kg) = Milligram per Kilogram, *Measurement of Uncertainty = +/- 10%



This report shall not be reproduced, without written approval, from ACS Laboratory. The results of this report relate only to the material or product analyzed. Test results are confidential unless explicitly waived otherwise. Accredited by a third-party accrediting body as a competent testing laboratory pursuant to ISO/IEC 17025 of the International Organization for Standardization.

THCp

 Sample ID: SA-220627-10215
 Batch: 1
 Type: In-Process Materials
 Matrix: Concentrate - Distillate
 Unit Mass (g):

 Received: 06/29/2022
 Completed: 07/06/2022

Client
 Pinnacle Hemp
 2900 Davis Blvd
 Joplin, MO 64804
 USA


Summary

Test Cannabinoids	Date Tested 07/06/2022	Status Tested
-----------------------------	----------------------------------	-------------------------

ND Total Δ9-THC	87.6 % Δ8-THCP	91.7 % Total Cannabinoids	Not Tested Moisture Content	Not Tested Foreign Matter	Yes Internal Standard Normalization
---------------------------	--------------------------	-------------------------------------	---------------------------------------	-------------------------------------	---

Cannabinoids by HPLC-PDA, LC-MS/MS, and/or GC-MS/MS

Analyte	LOD (%)	LOQ (%)	Result (%)	Result (mg/g)
CBC	0.0095	0.0284	ND	ND
CBCA	0.0181	0.0543	ND	ND
CBCV	0.006	0.018	ND	ND
CBD	0.0081	0.0242	ND	ND
CBDA	0.0043	0.013	ND	ND
CBDP	0.0067	0.02	ND	ND
CBDV	0.0061	0.0182	ND	ND
CBDVA	0.0021	0.0063	ND	ND
CBG	0.0057	0.0172	ND	ND
CBGA	0.0049	0.0147	ND	ND
CBL	0.0112	0.0335	ND	ND
CBLA	0.0124	0.0371	ND	ND
CBN	0.0056	0.0169	ND	ND
CBNA	0.006	0.0181	ND	ND
Δ8-THC	0.0104	0.0312	ND	ND
Δ8-THCP	0.0067	0.02	87.6	876
Δ9-THC	0.0076	0.0227	ND	ND
Δ9-THCA	0.0084	0.0251	ND	ND
Δ9-THCP	0.0067	0.02	4.08	40.8
Δ9-THCV	0.0069	0.0206	ND	ND
Δ9-THCVA	0.0062	0.0186	ND	ND
Total Δ9-THC			ND	ND
Total CBD			ND	ND
Total			91.7	917

ND = Not Detected; NT = Not Tested; LOD = Limit of Detection; LOQ = Limit of Quantitation; RL = Reporting Limit; Δ = Delta; Total Δ9-THC = Δ9-THCA * 0.877 + Δ9-THC; Total CBD = CBDA * 0.877 + CBD;



 Generated By: Ryan Bellone
 Commercial Director
 Date: 07/06/2022



 Tested By: Scott Caudill
 Senior Scientist
 Date: 07/06/2022

 ISO/IEC 17025:2017 Accredited
 Accreditation #108651
